



PRODUCT CATALOGUE





MA SIGMA WR

TECHNICAL SPECIFICATIONS

- * CPU
- * ARM® Cortex™-A9 core 1GHz
- * Linux Operating System
- * 5" WVGA color Touch-screen, VGA Camera
- * Loudspeaker & Microphone
- * Audio & Video player
- * FBI PIV IQS certified optical fingerprint sensor
- * Network/Communication
- * Ethernet, RS485, RS422, USB (host & slave)
- * Options:
 - Wi-Fi, 3G cellular communication
 - Internal storage capacity
 - 512MB Flash, 512MB RAM + SD Card slot
 - 3000 user records (2 fingers + 1 duress each), extendable up to 100 000 with SD Card and licenses
 - 250 000 user IDs in white list
 - 1 Million transaction logs (100 000 w/o SD Card)
 - 1 Million face picture logs (only w/ SD Card)
- * Inputs/outputs:
 - Wiegand In & Out (customizable up to 512 bits), Door Relay,
 - 3 GPI (including Door monitoring), 3 GPO
 - Power supply

- * Taper switches
- * Operating conditions
 - Temperature: -10°C to 55°C (14°F to 131°F)
 - Humidity: 10% to 80% (non condensing)
- * 2 design options
 - Weather Resistant (IP 65 rated) or Indoor
 - Compact with slim-profile
 - HxWxD = 153x151x58,5 mm (6×5,9×2,3 inches)
- * Ultra-light
 - About 470 grams (depends on variant)
 - Replaceable back-up battery
 - EMC/Safety standards
 - CE, CB, FCC, UI294
- * 12v-24v DC
- * Power over Ethernet (PoE) option
- * RoHS, REACH and WEEE compliant

ACCESS CONTROL AND TIME & ATTENDANCE FINGERPRINT STATION



- * Access Control
- * Time & Attendance
- * Outdoor Use (Weather Resistant)
- * User Capacity Standard: 5000, Upgrade: 50 000 / 100 000 with USD Card
- * Duress Finger
- * Fake Finger Detect
- * Video Phone Function
- * Microphone & Speaker
- * Camera
- * Face Detection & Picture Logging
- * White / Black Lists
- * Biometric & Card Support
- * NFC
- * 3G
- * Offline Transactions: 1 Million
- * IP65 & IK08 Rated



OUTDOOR DESIGN
(UL294 CERTIFIED)



MA SIGMA LITE

TECHNICAL SPECIFICATIONS

- * CPU: ARM® Cortex™ -A9 core 1GHz
- * Linux Operating System
- * FBI PIV IQS certified optical fingerprint sensor
- * Contactless reader options: Prox, iClass, MIFARE/MIFARE Plus/DESFire/NFC
- * Network/Communication:
 - Ethernet, RS485, USB
 - Wi-Fi option
- * Power supply:
 - 12V-24V DC
 - Power over Ethernet (PoE)
- 1:N mode: 3,000 user records, extendable to 10,000 with license (*3 templates each, including 1 duress)
- 1:1 mode: 250,000 user IDs
- 1 Million transaction logs
- * Internal storage capacity: 512MB Flash, 512MB RAM

SLIM AND POWERFUL FINGERPRINT ACCESS TERMINALS



- * World's #1 fingerprint technology inside: 1:10,000 user identification in 1 second
- * High capacity: 30,000 templates, 250,000 IDs in authorized user list, 1 Million logs
- * Anti-fraud features: fake finger detection, duress finger, timed anti-pass back
- * Flexibility: Prox®, iClass® or MIFARE® DESFire®/NFC contactless card reader as an option
- * Embedded web server
- * User Capacity Standard: 500 users
- * Tough design: IP65 rated and vandal resistant (IK08)
- * Compatible with Morpho and Bioscrypt existing installations



- * Inputs/outputs: Wiegand In & Out (customizable up to 512 bits), Door Relay, 2 General Purpose Inputs (including Door monitoring), 2 General Purpose Outputs
- * Tamper switches
- * Operating conditions:
 - Temperature: -20°C to 55°C (-4°F to 131°F)
 - Humidity: 10% to 80% (non condensing)
- * Ingress protection: IP65
- * Mechanical impact protection: IK08
- * HxWxD = 156*68*62 mm (6.14*2.68*2.44 inches)
- * Weight: 280 grams
- * EMC/Safety standards: CE, CB, FCC
- * RoHS, REACH and WEEE compliant

WEATHER AND VANDAL RESISTANT BY DESIGN



MA SIGMA LITE +

TECHNICAL SPECIFICATIONS

- * CPU: ARM® Cortex™ -A9 core 1GHz
- * Linux Operating System
- * FBI PIV IQS certified optical fingerprint sensor
- * Contactless reader options: Prox, iClass, MIFARE/MIFARE Plus/DESFire/NFC
- * Network/Communication:
 - Ethernet, RS485, USB
 - Wi-Fi option
- * Power supply:
 - 12V-24V DC
 - Power over Ethernet (PoE)
- 1:N mode: 3,000 user records, extendable to 10,000 with license (*3 templates each, including 1 duress)
- 1:1 mode: 250,000 user IDs
- 1 Million transaction logs
- * Internal storage capacity: 512MB Flash, 512MB RAM

SLIM AND POWERFUL FINGERPRINT ACCESS TERMINALS



- * World's #1 fingerprint technology inside: 1:10,000 user identification in 1 second
- * High capacity: 30,000 templates, 250,000 IDs in authorized user list, 1 Million logs
- * Anti-fraud features: fake finger detection, duress finger, timed anti-pass back
- * Flexibility: Prox®, iClass® or MIFARE® DESFire®/NFC contactless card reader as an option
- * Embedded web server
- * User Capacity Standard: 500 users
- * Tough design: IP65 rated and vandal resistant (IK08)
- * Compatible with Morpho and Bioscrypt existing installations



- * Inputs/outputs: Wiegand In & Out (customizable up to 512 bits), Door Relay, 2 General Purpose Inputs (including Door monitoring), 2 General Purpose Outputs
- * Tamper switches
- * Operating conditions:
 - Temperature: -20°C to 55°C (-4°F to 131°F)
 - Humidity: 10% to 80% (non condensing)
- * Ingress protection: IP65
- * Mechanical impact protection: IK08
- * HxWxD = 156*68*62 mm (6.14*2.68*2.44 inches)
- * Weight: 280 grams
- * EMC/Safety standards: CE, CB, FCC
- * RoHS, REACH and WEEE compliant

WEATHER AND VANDAL RESISTANT BY DESIGN



OUTDOOR MORPHOACCESS 500 SERIES

TECHNICAL SPECIFICATIONS

- *Wide-area, accurate fingerprint sensor, FBI PIV IQS certified, capable of withstanding harsh climatic environments
- *The OMA 500 terminals offer the highest level of security on the market
- *Fast: 0.7 sec in authentication mode and 0.9 sec in 1:1000 identification mode (including detection, coding and matching)
- *Accurate: depending on the required level of security, the false acceptance rate (FAR) can be configured down to 10-8
- *IP65 rated terminal mounted in a hardened, weatherized housing
- *The highest database capacity on the market: up to 100,000 fingerprint templates stores, with license
- *Multifactor authentication: with MIFARE and DESFire ISO 14443-A & B smartcard reader/encoder, fingerprint and PIN code
- *Operates in standalone or networked modes. For small populations, it is possible to capture fingerprints and encode badges on the terminal itself.
- *Equipped with numerous interfaces for easy intergration into existing systems
- *Trusted and versatile
- *Option: False finger detection with optronic sensor

FINGERPRINT IDENTIFICATION TERMINAL DESIGNER FOR OUTDOOR ACCESS CONTROL



- * Fast, Accurate and Reliable
- * Multifactor Authentication
- * Up to 50,000 users in one-to-many identification mode
- * Easy intergration into existing systems
- * Power-Over-Ethernet (PoE)
- * Ip65 weatherproof
- * Intergrated MIFARE and DESFire reader/encoder

- *Intergrated MorphoSmart sensor 23x23mm, 500 dpi
- *LCD graphical display 128x64 pixels
- *Keypad with 12 keys + 4 programmable function keys
- *Buzzer and LED
- *Dual-core ARM 9 microprocessors with multi-thread processing capability
- *Communication port for identifier management: customizable Wiegand IN & OUT, RS 485, RS 422, Clock & Data IN & OUT,
- *Ethernet (10/100 Base T), Wi-Fi in option
- *From 3000 to 50,000 people, two fingerprints each, split up into five databases of 10,000 individuals each (option, capacity submitted to MA-Xtended license)
- SSL on TCP/IP network
- *Secure screws, antitheft and anti-tamper switches
- *Operating temperature: -10c to 50c
- *Relative humidity: from 10 to 80% without condensation
- *Waterproof, anti-dust protection: Ip65 rated
- *Certified PIV IQS by the FBI, FIPS 201
- *CE and FCC Compliant
- *9v to 16v (350mA typical @ 12v) or PoE
- *Dimensions: LxHxD: 218x289x99mm
- *Weight: 2kg



MULTI APPLICATION FINGERPRINT SCANNER

- * High quality fingerprint capture and processing with optical sensor
- * Same terminal for enrollment and comparison
- * High storage capacity
- * Certifications: FBI PIV IQS, BSI TR-PDU, FIPS 201, MINEX
- * Options: Security features, fake finger detection, smartcard reader

MORPHOSMART 300 SERIES

TECHNICAL SPECIFICATIONS

- * Excellent fingerprint capture and processing performance with the largest sensor on the market (23x23mm, 500dpi),
- * Authentication < 0.7 sec (including detection, encoding and matching)
- * Identification < 0.9 sec in 1:1000 mode (including detection, encoding and matching)
- * Top grade solution to register young or elderly people, manual laborers (mining, textile)
- * Overall performance certified at the highest levels, that meets and exceeds requirements of: FBI PIV IQS, BSI TR-PDU, MINEX AND FIPS 201.
- * Accurate: the false acceptance rate (FAR) is configurable down to 10⁻⁸, depending on the security requirements
- * Large database capacity: from 500 up to 5000 users with license.
- * A versatile terminal that carries out both enrollment and comparison operations
- * Guides the user and automatically controls the image quality during enrollment
- * Choice of fingerprint template formats: ANSI/INCITS 378, ISO 19794-2 or Morpho Proprietary
- * CE, FCC and RoHS compliant

- * Options:
 - Smartcard Reader
 - Fake finger detection
 - Data protection:
- * Two different security operating modes: Data integrity check by the host - by way of a digital signature - or encrypted data exchange - using secure tunneling
- * The MorphoSmart SDK (Software Development Kit) is available for VARs wishing to develop various types of applications. It uses the MorphoSmart embedded algorithms:
 - BioAPI interfaced included
 - Development of Linux platforms (available on request)
 - ILV Protocol available
- * The MSO 300 Series can be used with MorphoKit, SDK for the capture and processing of fingerprint images, authentication and identification.



USB FINGERPRINT DEVICES FOR HIGHLY SECURE DESKTOP APPLICATIONS

- * Enrollment and Matching on the same terminal
- * Suitable for desktop and laptop applications
- * One-to-one authentication and one-to-many identification
- * Enhanced security features
- * Integrated smartcard reader available

MORPHOSMART 1300 SERIES

TECHNICAL SPECIFICATIONS

- * A class of performance certified at the highest level: FIPS 201, MINEX, FBI PIV IQS
- * Fast processing during enrollment, identification and authentication:
- * Authentication < 0.6 sec (including detection, encoding and matching)
- * Identification < 0.8 sec in 1:1000 identification mode (including detection, encoding and matching)
- * High capacity database in identification mode: 500 users or 1000 fingerprint templates. The stored templates are protected against fraudulent extraction:
- * A version with integrated smartcard reader is available (MSO 1350)
- * Multi task: can perform enrollment, local matching or matching against a remote database. It can also manage a local database
- * Smart and user friendly: sensors that guide the user during enrollment (finger position, pressure, etc) to acquire the best possible fingerprint image
- * Accuracy: the False Acceptance Rate (FAR) can be configured down to 10⁻⁸, depending on the security requirement.

- * FIPS PIV IQS certified versions available (MSO 1300 E/E2, MSO 1350 E/E2)
- * FIPS 201 certified version available (MSO 1300 E/E2, MSO 1350 E/E2)
- * CE, FCC and RoHS compliant



- * Robust, powder-coated metal case
- * Light weight and small form factor for ease of use
- * Standard CTP-IP communications
- * Internal battery for portable use
- * Battery level and power indicators
- * Lock and key tamper prevention
- * Battery: Thermal, over and under voltage protection

MARC V2 LITE

TECHNICAL SPECIFICATIONS

Housing:

- * Robust metal case to protect biometric reader
- * Optional wall mounting back plate
- * Durable handle
- * 4 Stabilising rubber feet

Power Supply:

Battery and charger included

Interfaces:

- * Push button power switch
- * Ethernet socket for standard network connection
- * Key switch for tamper prevention
- * Optional WiFi dongle available
- * Terminal management via TCP/IP
- * Heavy duty push button and key switch
- * Long battery life +/- 16hrs at full operation
- * Fast charge cycle (under 3hrs)
- * Compatible with Ip65 Units: MA Sigma Lite and MA Sigma Lite Plus
- * Robust solution ideal for use at remote sites
- * Sigma reader sold separately
- * Physical detail: WxHxD 172x188x92mm - 2KG without Lite mounted)





MORPHOMANAGER

TECHNICAL SPECIFICATIONS

USER MANAGEMENT:

- * Manage up to 100,000 users in database
- * Enroll demographics, photo, fingerprint/finger vein data (up to 10 fingers) and 3D face data at once
- * Maximize data acquisition quality and overall biometric system performance using sensors, coding algorithms and enrollment processes.
- * Allocate operator roles and privileges
- * Define user access time slots and group assignment

REPORTING & BACKUP TOOLS

- * Retrieve in real-time and store up to 1,000,000 access logs
- * User Onsite/Offsite reporting
- * Accurate time recording
- * Various reporting options available to display information about:
 - User inactivity
 - Terminal activity
 - Group activity
- * Automatic export of transaction history for import into payroll packages
- * Database backup and copy tools

SEAMLESS INTERGRATION OF BIOMETRICS AND ACCESS CONTROL

- * Robust, powder-coated metal case
- * Light weight and small form factor for ease of use
- * Standard CTP-IP communications
- * Internal battery for portable use
- * Battery level and power indicators
- * Lock and key tamper prevention
- * Battery: Thermal, over and under voltage protection

HARDWARE REQUIREMENTS

Processor: Dual Core CPU, RAM: 4GB Ports: 3 USB, Network: 100Mbps Ethernet port required for client/server connections, Camera: any USB webcam

Operating Systems:

- Windows XPSP3/Vista Sp1/7/8/8.1
- Windows Server 2003 R2, 2003 R2 Sp2, 2008 / 2008 R2 / 2012 / 2012 R2

Database:

- SQL Server (2005 or later)
- SQL Server Compact Edition 4.0



TERMINAL ADMINISTRATION

- * Connect and configure up to 5000 biometric readers via LAN, WAN, or Wi-Fi
- * Integrate multiple biometric modalities (fingerprint, finger vein and face) and multiple recognition factors (biometrics, card and PIN in a single system)
- * Group terminals according to security perimeters within the installation
- * Select conventional access control mode or advance time & attendance features

DEPLOYMENT

- * Save time and money with reduced setup, intuitive interface and field-proven workflows
- * Single PC or advanced Client/Server configuration
- * Use as standalone application or intergrated with 3rd party access control systems



FAST, EFFORTLESS AND SECURE FACE RECOGNITION PHYSICAL ACCESS CONTROL TERMINAL

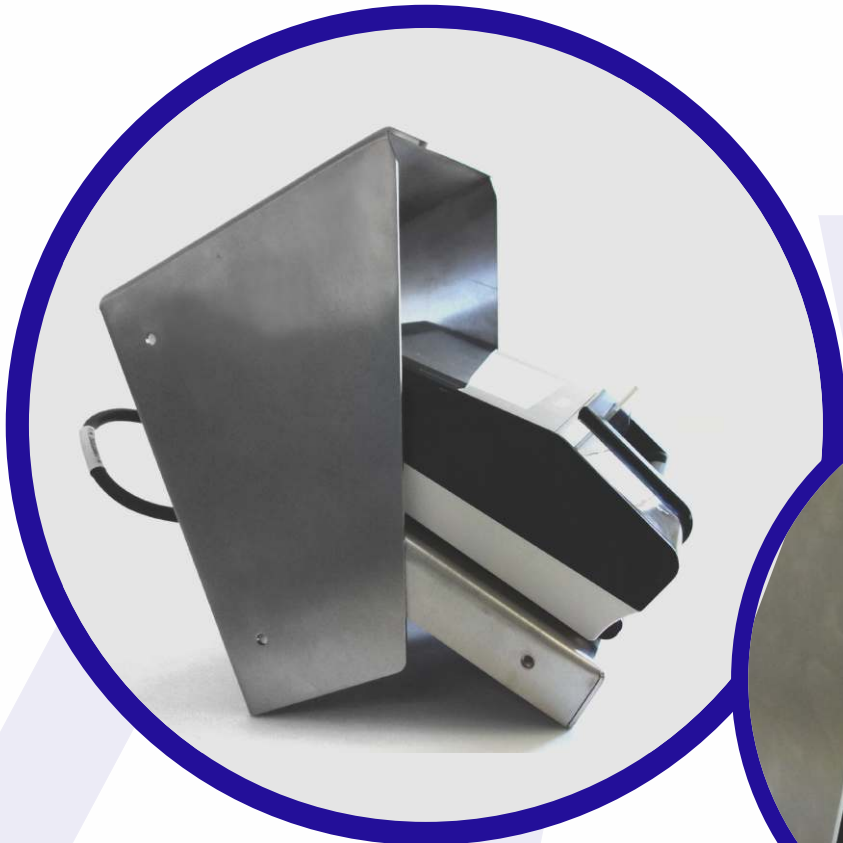
- * Authentication in under a second
- * 4-inch color LCD screen to aid in user positioning
- * Accurate matching using 40,000 data points
- * Up to 60,000 users stored in the database for verification

MORPHO 3D FACE READER

TECHNICAL SPECIFICATIONS

- *Real-time 3D imaging technology
- *4-inch color LCD screen
- *Customizable voice prompts
- *Template storage capacity:
 - 60,000 templates
- *Event Log Capacity: 100,000 Logs
- *Terminal Block: Wiegand, Relay, Rs232, Power and Earth Ground
- *Voltage: 24V CD @ 3amps
- *Power Draw: Idle: 1.50amps; Max: 3.00 amps
- *Wall-Mounting Bracket
- *Dimensions HxWxD
 - 355 x 132 x 116mm
 - 13.95 x 5.19 x 4.47 inches
- * Operating Temperature:
 - 5 celcius to 55 celcius; 41 farenheit to 131 farenheit
 - (For indoor use only - Recommend an environmental enclosure for outdoor use)
- * Regulatory Approvals and Certifications: FCC Class A, CE, RoHS
- * Administration Software Options: 3D Template enrollment management and administration can be handled by either 3D face SDK or the 3Di Admin Manager





SIGMA AND SIGMA LITE STAINLESS STEEL HOUSING



MA SIGMA STAINLESS STEEL RUGGERDISED COVER

TECHNICAL SPECIFICATIONS

- * Shields against weather conditions
- * Manufactured from strong stainless steel
- * Durable and rust proof
- * Stylish design
- * Easy wall, gooseneck or turn-style mount
- * Mounting insert plate
- * Provides space for connections & cables
- * Simplifies installation and maintenance
- * Protects network jack and cabling

THE IDECO PARTNER CHANNEL

CERTIFIED IDECO PARTNER CHANNEL EXTRAS

Repairs & Warranty

Ideco is the only certified Safran Morpho Component Repair Centre in the Southern Hemisphere and comprehensive repair services on hardware are carried out by a highly skilled and proficient team of Ideco technicians. Preferential repair rates are given to hardware purchased via the Ideco certified partner channel and our workshops offer a fast track option for urgent repairs.

New Product Releases and Notifications

Ideco will issue the latest version of firmware, software and SDKs after they have been tested and verified. Release notes and notifications of fixes and bugs are communicated regularly via emails and a secure partner login via our website.

Intergration

Ideco offers a comprehensive, flexible and customizable integration service for any products you may wish to integrate with Morpho's hardware or software.

Certification Training

Being the top Morpho Distributor we offer extensive certification training from a technical and sales perspective to equip the staff and installers of our partners to understand, sell, install and maintain Morpho and Ideco value added products successfully.

Support

SALES	TECHNICAL
<ul style="list-style-type: none"> • Pre-Sales Support, Meetings and Presentations • Assistance with Proof Of Concepts • Marketing campaigns and marketing material including case studies • Assistance with tenders • Demo equipment on load • Special Project Registrations • Joint Marketing Campaigns • Road Shows, Exhibitions & Focus Groups • Corporate Golf Membership 	<ul style="list-style-type: none"> • Telephonic Support • Fingerprint Enrolment • TeamViewer Sessions

Value Added Products

Ideco has a range of value added products to complement the existing Morpho range and to strengthen the access control application offering to customers.

Quality Products & Services

Our core focus is to deliver world-class international standards compliant products and services to guarantee customer satisfaction. One of the elements that make Ideco unique is that all equipment goes through a stringent quality assessment prior to be dispatched to customers.

CONTACT US



087 802 CCTV (2288)



sales@reditron.co.za



www.reditron.co.za



JOHANNESBURG (HEAD OFFICE)

9 Electron Road, Linbro Business Park. Sandton
Tel: 087 802 CCTV (2288)



CAPE TOWN

Unit 2, 7 Gold Street, Northgate Estate,
Maitland
Tel: 021 551 5841



DURBAN

Unit 9, 80 Rinaldo Road, Glen Anil
Tel: 031 263 1515



NELSPRUIT

Unit 4B, Waterfall Park,
17 Rapid Street, Riverside Industrial
Tel: 087 150 5517/8



PORT ELIZABETH

84 Pickering Street, Newton Park
Tel: 041 373 0395

